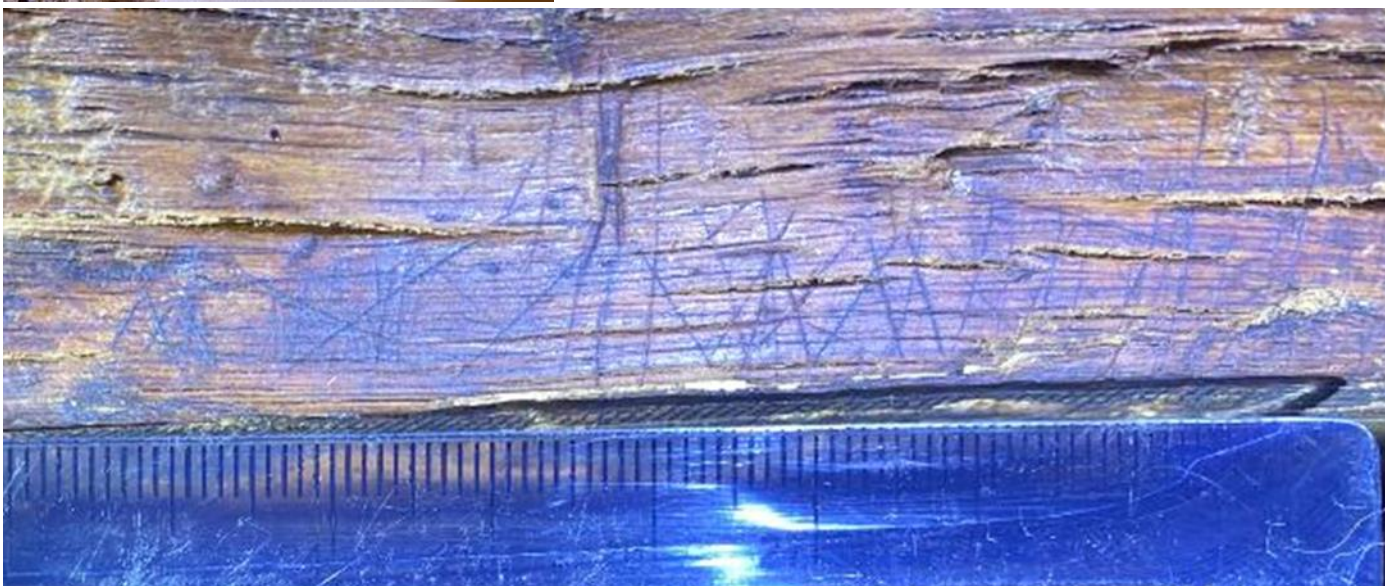
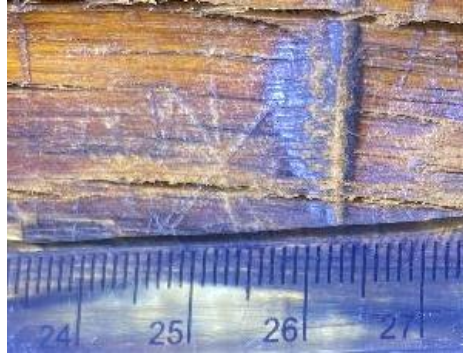


d. Crosses

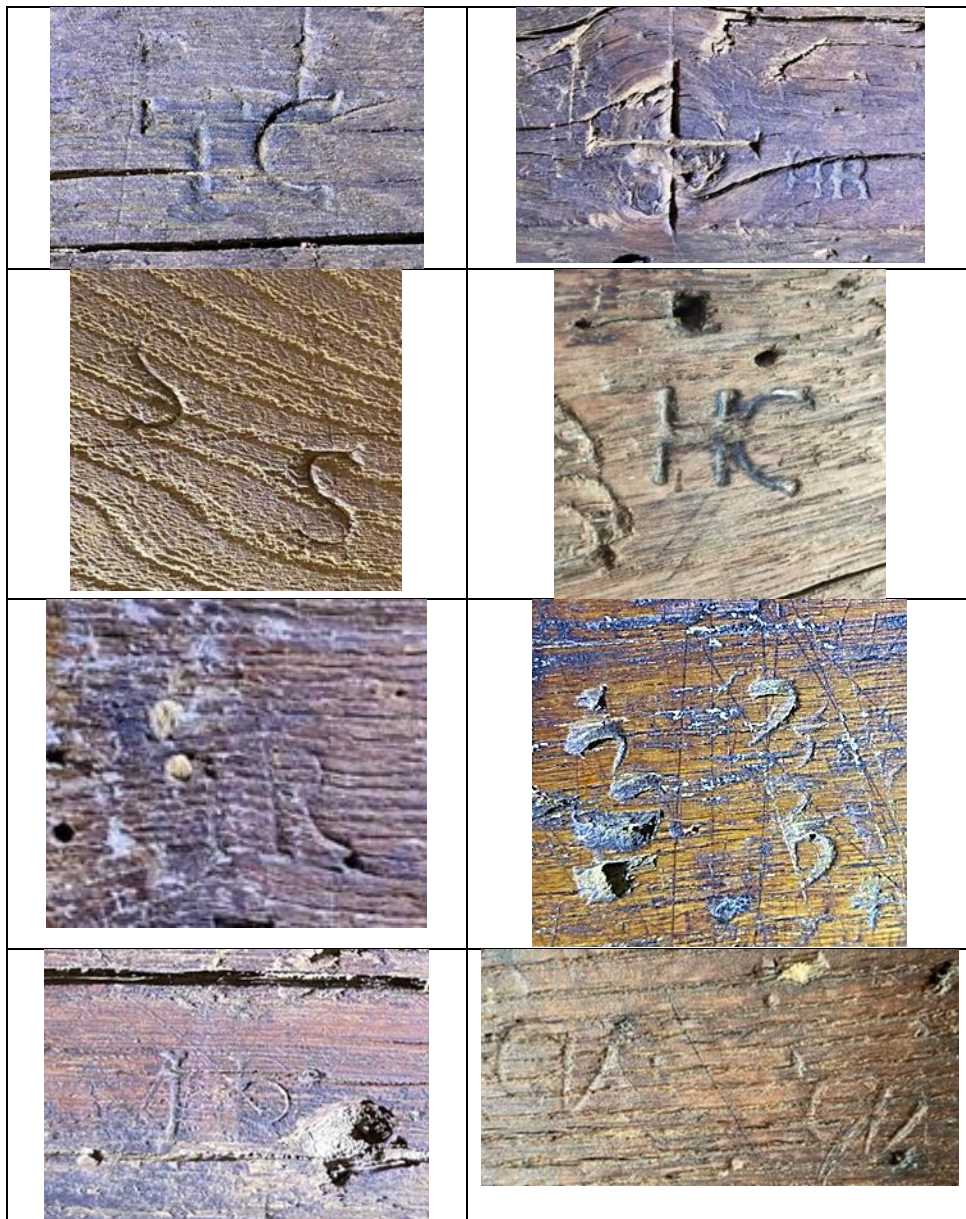
A variety of crosses are present, not as common as would be expected until we realise that often a cross or crucifix would hang on the wall and has long since gone. Clearly, they are a statement of belief and would have been used also for protection. The X-shaped cross or Saltire has been seen in a number of Hoxne locations barring entrance to undesired spiritual incursions. This has been seen at Abbey Farm already but at 16 Cross Street it can be seen in the filled in 16th century door to a workshop or shop. The crisp, well carved Greek Cross on the bressummer of Abbey View, Cross street may point to an early association with the Abbey opposite it. The Chi Rho Monogram is an ancient symbol which in Greek spells Chr – the first 3 letters of Christ's name. One clear example is present at 23 Low Street. If the R parent is lost it makes a star-shaped cross. One is above the door in Yew Tree Cottage and one in the centre of the bressummer at 54 Low Street in concealed inscription on the bevelled edge.





e. Other stamp marks

On the bressummers from the early 16th century and earlier there are often letter stamps. These are thought to be the initials of the original owners. Could the HR relate to Henricus Rex? It was at Abbey View and is thought to have been connected to the Abbey which was dissolved by Henry Eight.

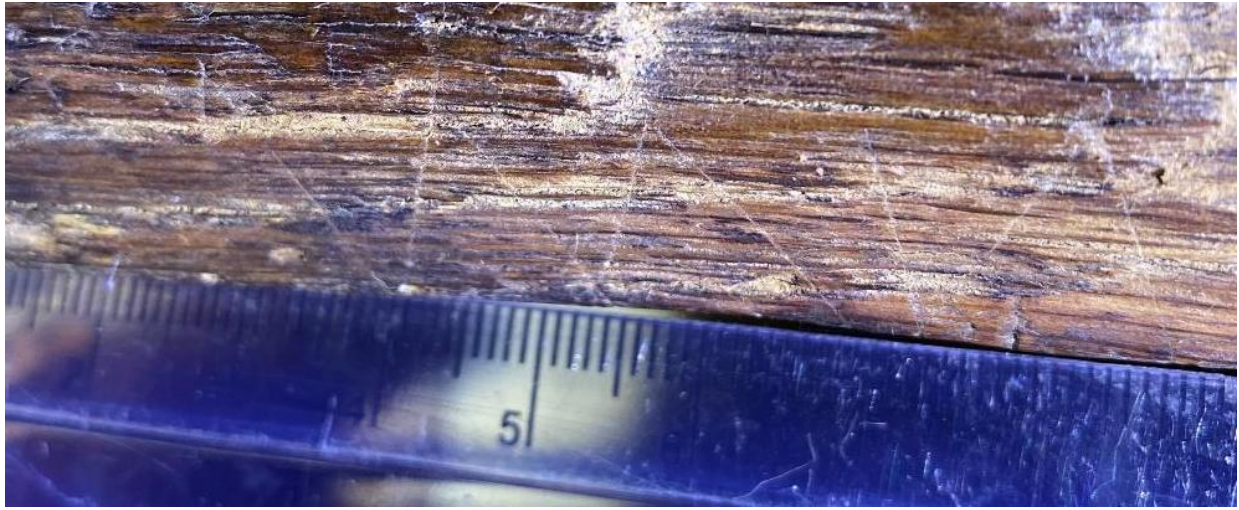




f. Mesh, lightening and butterfly marks, arrows

Butterfly marks are found in a few early houses (16 Cross Street, Yew Tree House, 54 Low Street) often upstairs and associated with windows.





Mesh marks, again an early feature and are present in 54 Low Street and Locks Pyghtle, Thorpe Abbotts

A zig-zag lightening pattern found on the bressummers of 54 Low Street and Locks Pyghtle, Thorpe Abbotts

In the centre of the Bressummer of a number of 16th and early 17th century buildings (23 Low Street, 54 Low Street, Beech Cottage, Locks Pyghtle, are single, upward pointing arrows.

